

# Final & Inst. manual for Sea water fire Fighting Appliance

Ship Yard :  **SAMSUNG** HEAVY INDUSTRIES CO. , LTD

Hull No. : HN2074

Ship Type : 170,000m<sup>3</sup> LNG FSRU

IMO No. : 9684495

**FOR FINAL**

DATE : 2015. 04. 14.

# Final & Inst. manual for Sea water fire Fighting Appliance

Ship Yard :  **SAMSUNG** HEAVY INDUSTRIES CO. , LTD

Hull No. : HN2074

Ship Type : 170,000m<sup>3</sup> LNG FSRU

IMO No. : 9684495

**FOR FINAL**

DATE : 2015. 04. 14.

# Final & Inst. manual for Sea water fire Fighting Appliance

Ship Yard :  **SAMSUNG** HEAVY INDUSTRIES CO. , LTD

Hull No. : HN2074

Ship Type : 170,000m<sup>3</sup> LNG FSRU

IMO No. : 9684495

**FOR FINAL**

DATE : 2015. 04. 14.

# PLAN HISTORY

| Approved :              |           | Owner : -                                |   |          |
|-------------------------|-----------|--|---|----------|
| Checked : Nam-Kyun, Kim |           | Project : 170,000m <sup>3</sup> LNG FSRU |   |          |
| Checked : N. K. KIM     |           | Class : DNV                              |   |          |
| Drawn : Y. S. PARK      |           | Flag : BERMUDA                           |   |          |
| Date : 2015. 04. 14.    |           | Dwg. No. : 300-2074-000                  |   |          |
| Rev. No.                | Alt. Mark | Date                                     | Description   | Conf. By |
| 0                       |           | 2014. 02. 14.                            | Submit to yard for approval by Letter No. NK-14-57137 | J.Y.KIM  |
|                         |           | 2014. 05. 20.                            | Submit to yard for working by Letter No. NK-15-64857  | J.S.SHIM |
|                         |           | 2015. 04. 14.                            | Submit to yard for final by Letter No. NK-15-64858    | J.Y.KIM  |
|                         |           |  |   | J.S.SHIM |
|                         |           |  |   | Y.S.PARK |
|                         |           |  |   | N.K.KIM  |

# INDEX

|                 |       |        |
|-----------------|-------|--------|
| SCOPE OF SUPPLY | ----- | 1      |
| DATA SHEET      | ----- | 2 ~ 10 |

## SCOPE OF SUPPLY

[illegible]

NK CO., LTD

497, Shinpyeong-Dong, Saha-Gu, Busan, Korea  
TEL. : 82-51-204-2211~3, FAX.: 82-51-204-2215  
[www.nkcf.com](http://www.nkcf.com)

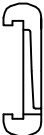


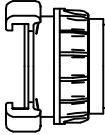
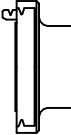
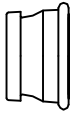
DATA SHEET : 330-2074-000

PART NO. : N/A

SHEET : 1 / 1

# HOSE WITH COUPLING

## COUPLING

|   |   |   |   |   |   |
|---|---|---|---|---|---|
|  |  |  |  |  |  |
| JIS   | ANSI  | STORZ   | NS  | SIS   | BS  |



## SPECIFICATION

- JACKET :
  - 100% HIGH TENACITY POLYESTER YARN.
  - CIRCULAR-WOVEN TWILL WEAVE, WARP THREADS 2-PLY TWISTED
- INNER LINING :
  - HIGH-QUALITY, VERY LIGHT SYNTHETIC RUBBER ON THE BASIS OF EPDM.
  - STEAM OR HOT AIR VULCANIZED.
  - VERY SMOOTH FOR MINIMUM FRICTION LOSS.
- EXTERNAL COATING
  - SYNTHETIC COATING FOR BETTER ABRASION AND PROTECTION.
  - FLAME-RESISTANT.
  - OIL-AND FUEL-RESISTANT
- PROPERTIES
  - SEAWATER-RESISTANT , WEATHER-RESISTANT.
  - AGEING AND OZONE RESISTANT
  - TEMPERATURE RANGE FROM  $-40^{\circ}\text{C}$  UP TO  $+100^{\circ}\text{C}$
- BURSTING PRESSURE : MIN 42BAR
- HYD.TEST PRESSURE : 24 BAR
- DESIGN PRESSURE : 16 BAR
- WORKING PRESSURE : 10 BAR
- COLOR : RED
- APPROVAL : MED



NK CO., LTD

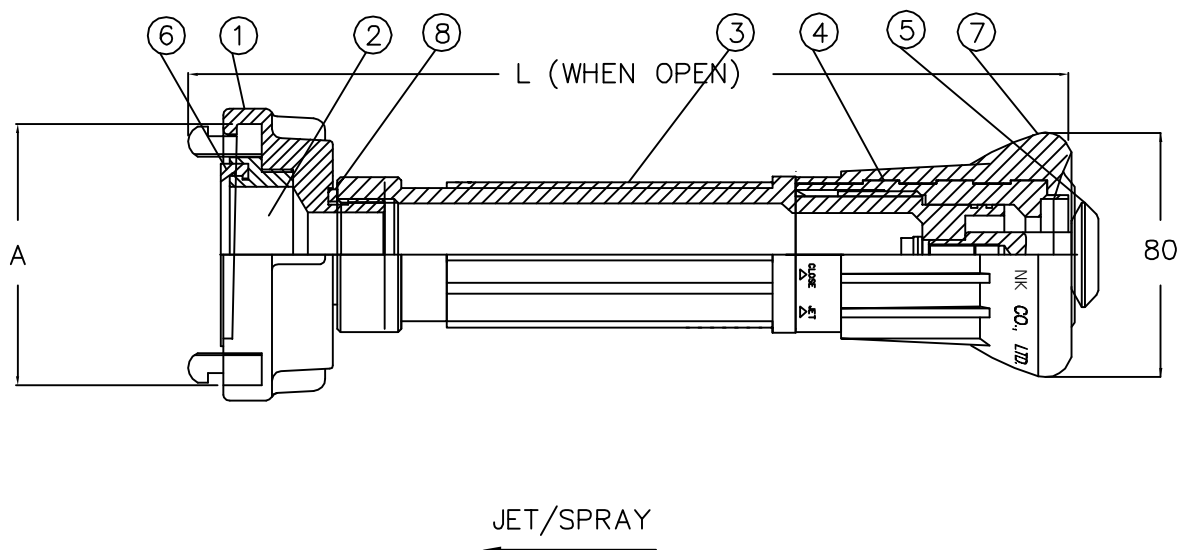
497, Shinpyeong-Dong, Saha-Gu, Busan, Korea  
 TEL. : 82-51-204-2211~3, FAX.: 82-51-204-2215  
[www.nkcf.com](http://www.nkcf.com)

DATA SHEET : 330-108-102

PART NO. : —

SHEET : 1 / 1

## JET / SPRAY NOZZLE



| NOMINAL SIZE        | A   | L   | WEIGHT (Approx.) | NOZZLE TYPE | PART NO.     |
|---------------------|-----|-----|------------------|-------------|--------------|
| STORZ C (2")        | 86  | 290 | 1.6 kg           | Ø12         | 116N1310ME-M |
|                     |     |     |                  | Ø16         | 116N1311ME-M |
|                     |     |     |                  | Ø19         | 116N1312ME-M |
| STORZ 65mm (2-1/2") | 113 | 305 | 2.0 kg           | Ø12         | 116N1301ME-M |
|                     |     |     |                  | Ø16         | 116N1302ME-M |
|                     |     |     |                  | Ø19         | 116N1303ME-M |

| NO. | DESCRIPTION     | MATERIAL  | Q'TY | REMARK     |
|-----|-----------------|-----------|------|------------|
| 1   | SWIVEL COUPLING | BRONZE    | 1    | STORZ TYPE |
| 2   | BASE COUPLING   | PC(PT610) | 1    |            |
| 3   | NOZZLE BODY     | PC(PT610) | 1    |            |
| 4   | OUT COVER       | BRONZE    | 1    |            |
| 5   | NOZZLE TIP      | BRONZE    | 1    |            |
| 6   | PACKING         | NBR       | 1    |            |
| 7   | COVER           | NBR       | 1    |            |
| 8   | PACKING         | NBR       | 1    |            |

## NOTE

- APPROVAL : MED



NK CO., LTD

497, Shinpyeong-Dong, Saha-Gu, Busan, Korea  
 TEL. : 82-51-204-2211~3, FAX.: 82-51-204-2215  
[www.nkcf.com](http://www.nkcf.com)

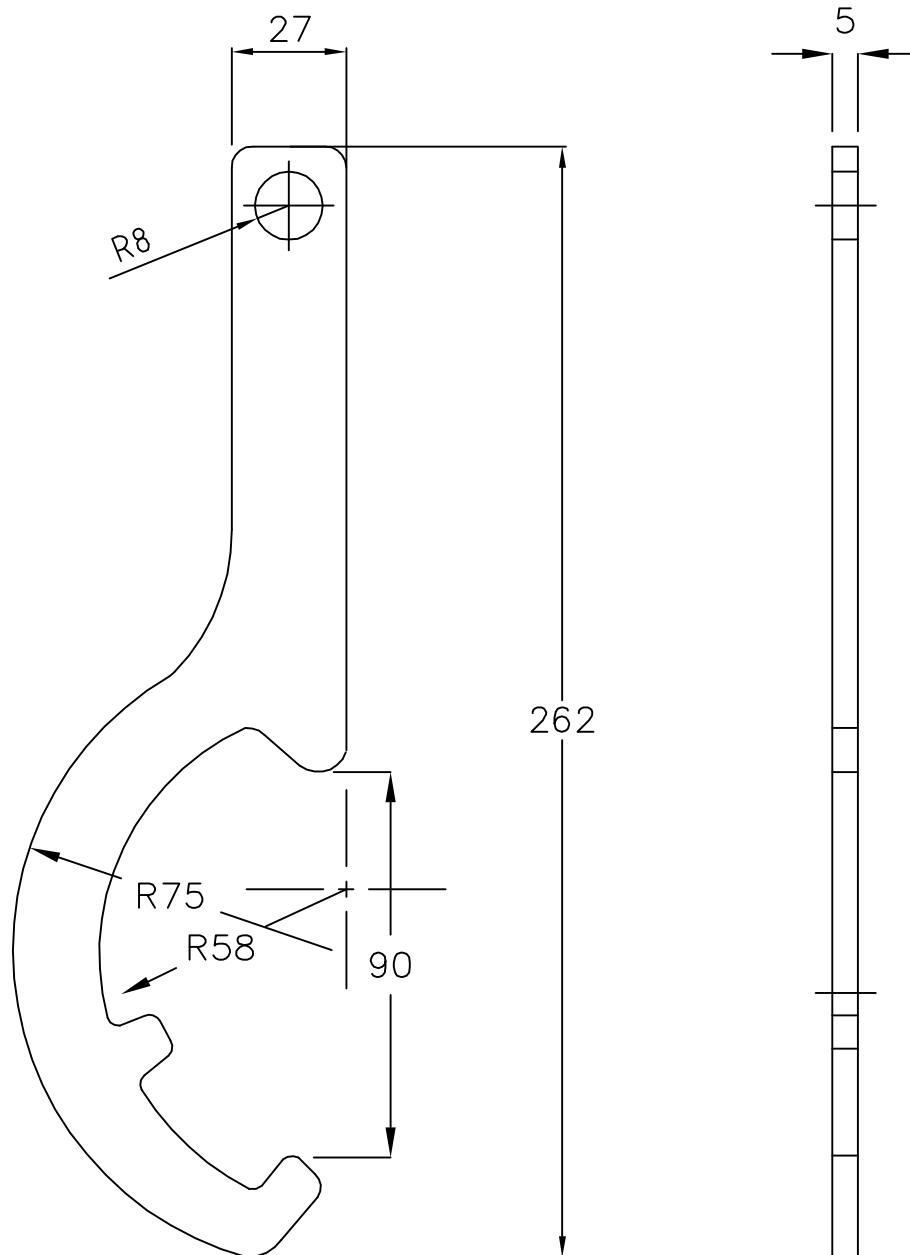
DATA SHEET : 330-203-101

PART NO. : SEE ABOVE

SHEET : 1 / 1



# SPANNER



## SPECIFICATION

- MATERIAL : SS400
- FINISH : GAL'V
- WEIGHT : APPROX. 0.3 kg



NK CO., LTD

497, Shinpyeong-Dong, Saha-Gu, Busan, Korea  
 TEL. : 82-51-204-2211~3, FAX.: 82-51-204-2215  
[www.nkcf.com](http://www.nkcf.com)

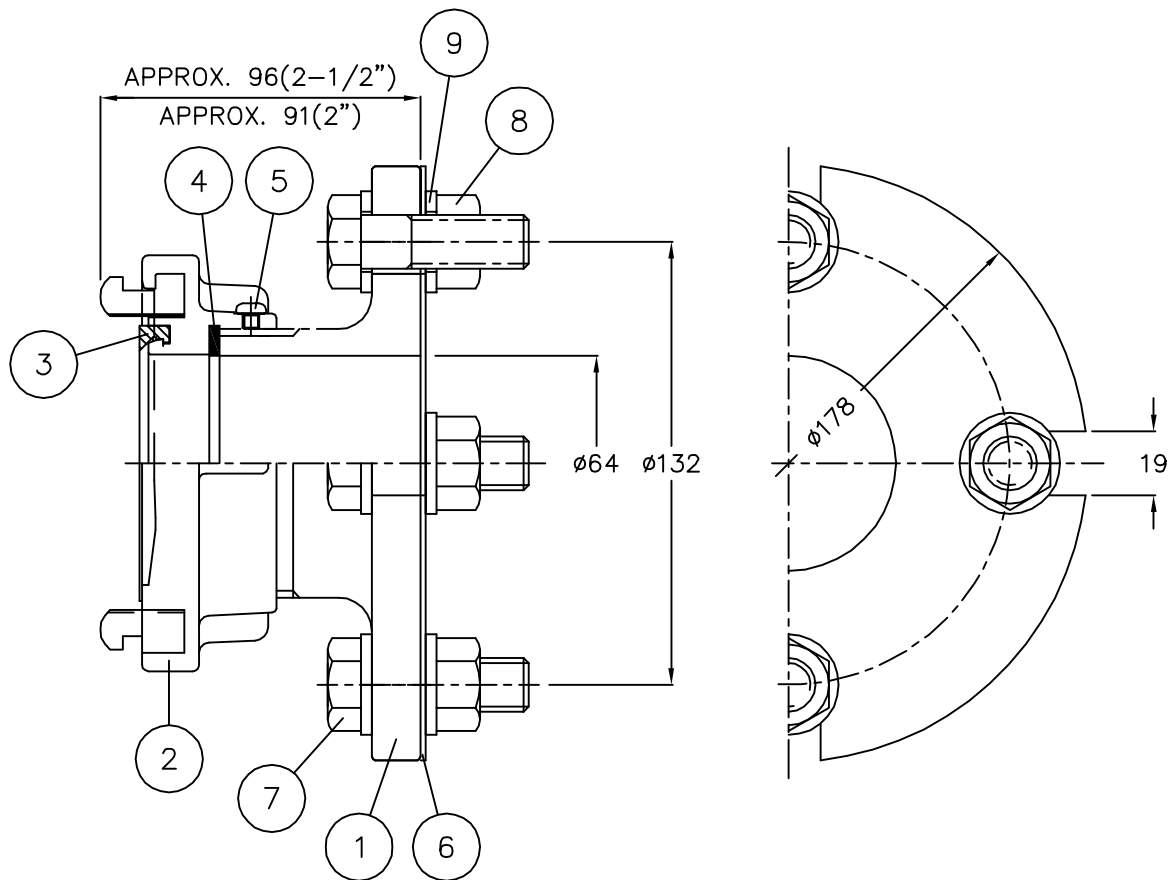
DATA SHEET : 330-403-100

PART NO. : 116N6301

SHEET : 1 / 1

## INTERNATIONAL SHORE CONNECTION

STORZ(DIN) TYPE



| NO | DESCRIPTION | MATERIAL          | Q'TY | REMARK          |
|----|-------------|-------------------|------|-----------------|
| 1  | BASE FLANGE | BC 2              | 1    |                 |
| 2  | COUPLING    | BC 2              | 1    | STORZ(DIN) TYPE |
| 3  | PACKING     | NBR               | 1    |                 |
| 4  | PACKING     | NBR               | 1    |                 |
| 5  | GASKET      | UNIVERSAL PACKING | 1    | 1.5t            |
| 6  | HEX. BOLT   | SS400             | 4    | M16x50L GAL'V   |
| 7  | NUT         | SS400             | 4    | M16 GAL'V       |
| 8  | WASHER      | SS400             | 8    | M16 GAL'V       |
| 9  | SET SCREW   | C3604BD           | 1    | M5(KS B1025)    |

## SPECIFICATION

- WEIGHT : APPROX. 6.7, 7.2 ±0.5 kg
- APPROVAL : K.G
- PART NO. : STORZ-B(3'') : 116N4301KG
- : STORZ 65mm : 116N4301-M
- : STORZ-C(2'') : 116N4302KG ←



NK CO., LTD

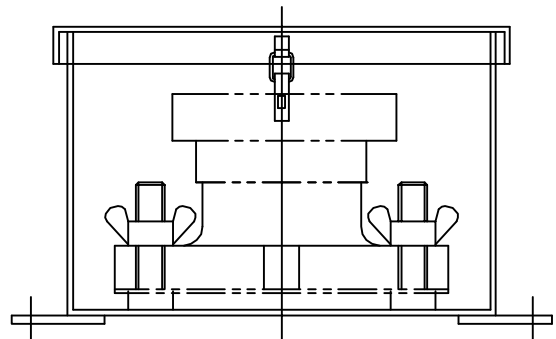
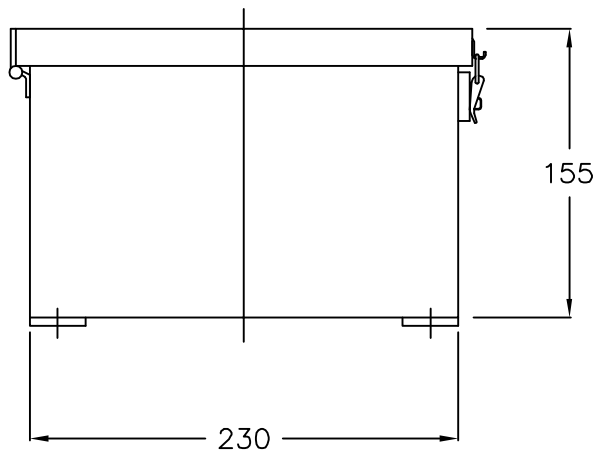
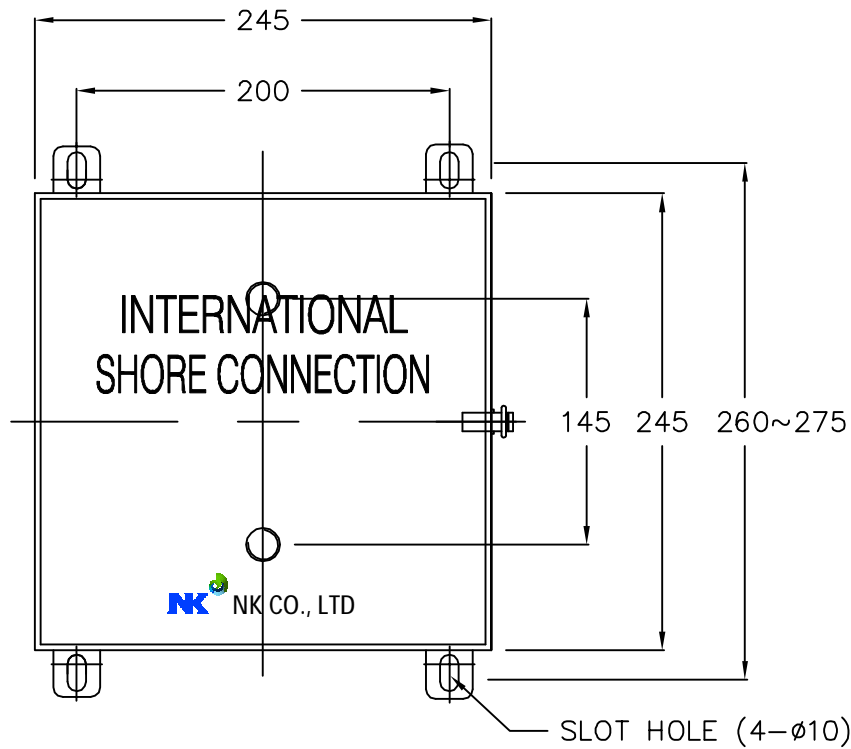
497, Shinpyeong-Dong, Saha-Gu, Busan, Korea  
 TEL. : 82-51-204-2211~3, FAX.: 82-51-204-2215  
[www.nkcf.com](http://www.nkcf.com)

DATA SHEET : 330-303-100

PART NO. : SEE ABOVE

SHEET : 1 / 1

# INTERNATIONAL SHORE CONNECTION BOX



## SPECIFICATION

- MATERIAL : STEEL 2.3 t and HINGE SUS316
- COLOR : RED BASE AND WHITE LETTER
- NAME PLATE : "INTERNATIONAL SHORE CONNECTION"



NK CO., LTD

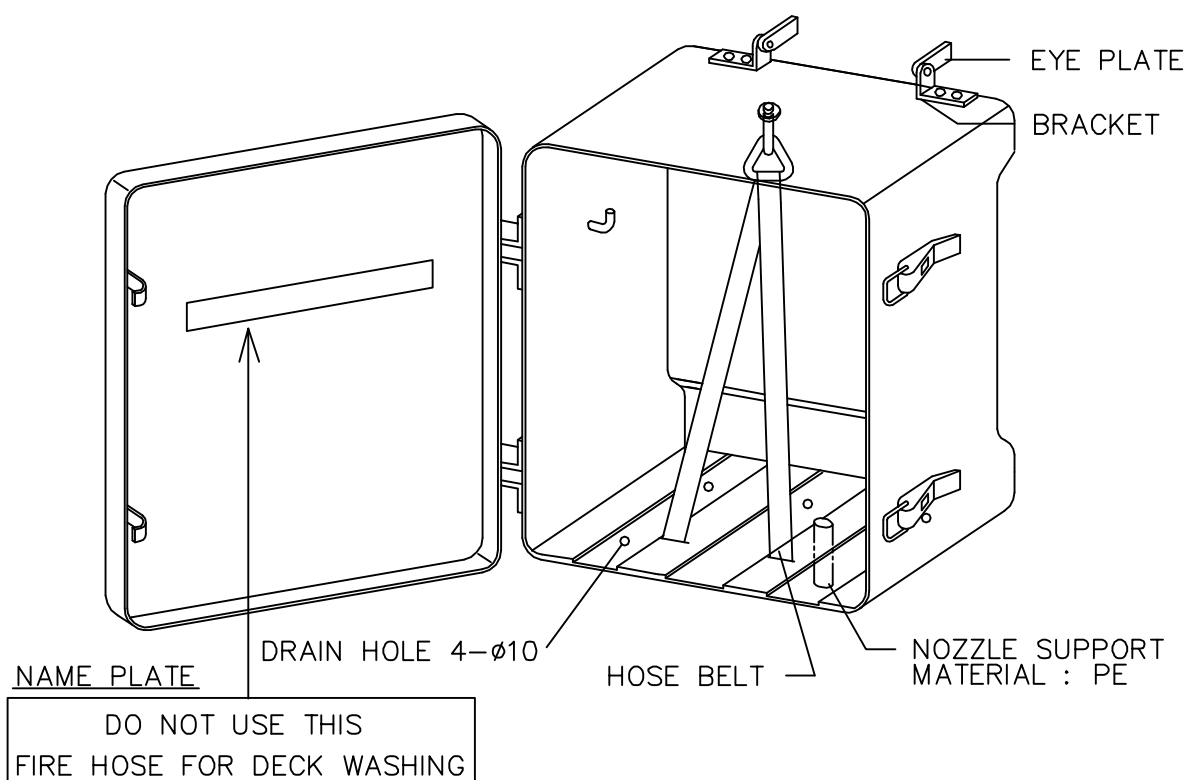
497, Shinpyeong-Dong, Saha-Gu, Busan, Korea  
TEL. : 82-51-204-2211~3, FAX.: 82-51-204-2215  
[www.nkcf.com](http://www.nkcf.com)

DATA SHEET : 330-310-201

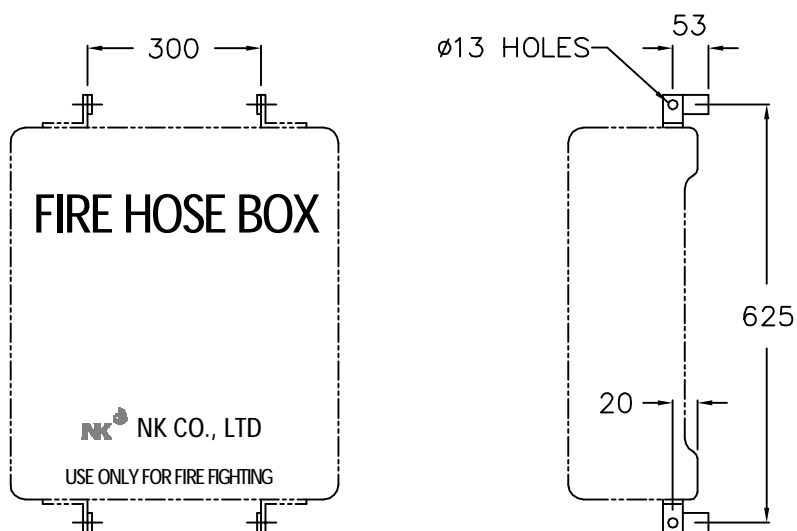
PART NO. : 123N4300

SHEET : 1 / 1

# FIRE HOSE BOX



## FIXING DIMENSION



## SPECIFICATION

- MATERIAL : GRP
- SIZE : 460W x 560H x 190D
- COLOR : OUTSIDE/INSIDE- RED
- NAME - WHITE
- NAME MARK - "FIRE HOSE BOX"
- WEIGHT : APPROX. 8 kg



NK CO., LTD

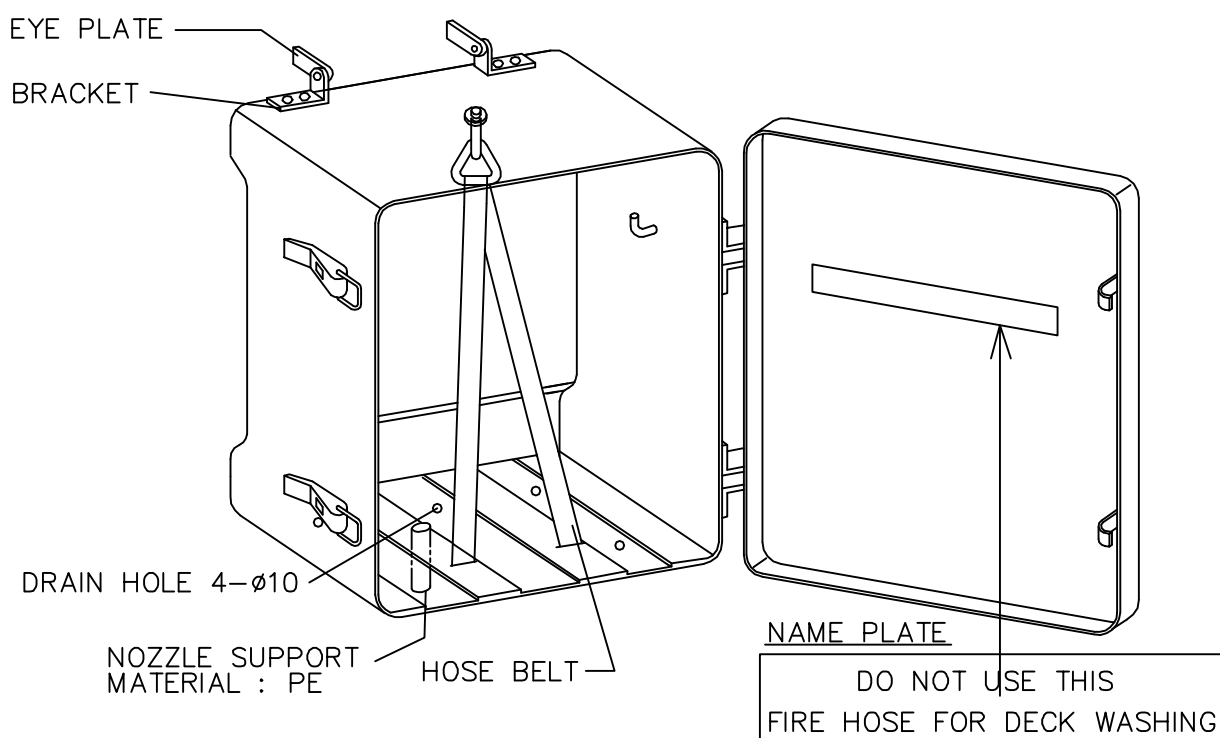
497, Shinpyeong-Dong, Saha-Gu, Busan, Korea  
 TEL. : 82-51-204-2211~3, FAX.: 82-51-204-2215  
[www.nkcf.com](http://www.nkcf.com)

DATA SHEET : 340-101-350

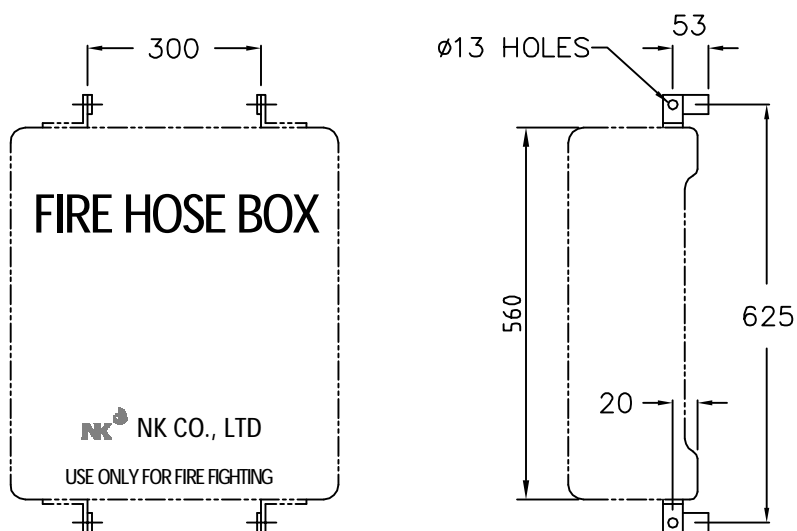
PART NO. : 115N80031

SHEET : 1 / 1

# FIRE HOSE BOX



## FIXING DIMENSION



## SPECIFICATION

- MATERIAL : GRP
- SIZE : 460W x 560H x 190D
- COLOR : OUTSIDE/INSIDE- RED
- NAME - WHITE
- NAME MARK - "FIRE HOSE BOX"
- WEIGHT : APPROX. 8 kg



NK CO., LTD

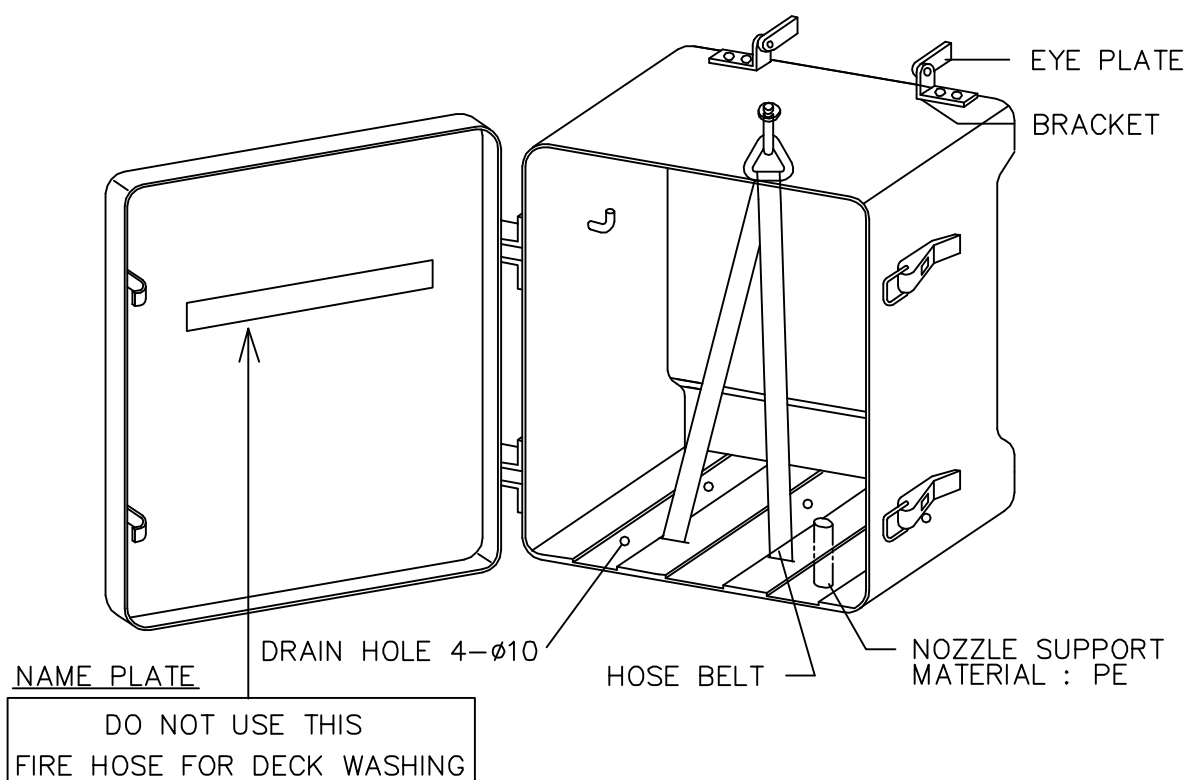
497, Shinpyeong-Dong, Saha-Gu, Busan, Korea  
 TEL. : 82-51-204-2211~3, FAX.: 82-51-204-2215  
[www.nkcf.com](http://www.nkcf.com)

DATA SHEET : 340-101-350

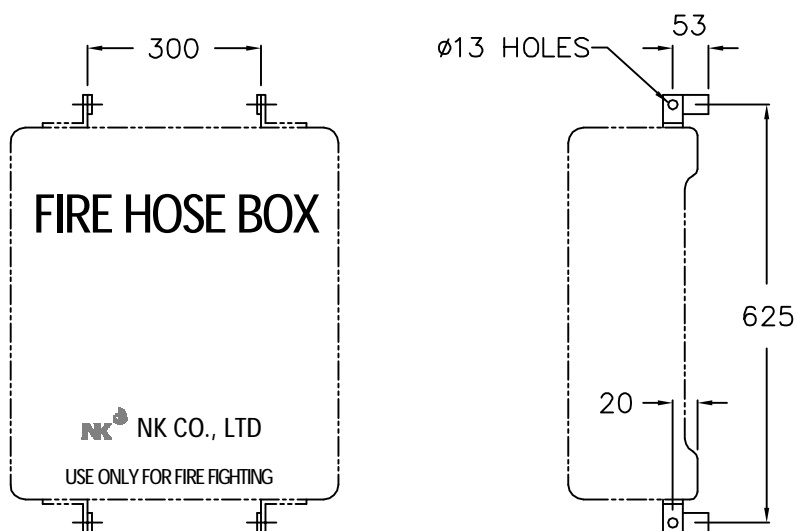
PART NO. : 115N80001

SHEET : 1 / 1

# FIRE HOSE BOX



## FIXING DIMENSION



## SPECIFICATION

- MATERIAL : GRP
- SIZE : 580W x 560H x 250D
- COLOR : OUTSIDE/INSIDE- RED
- NAME - WHITE
- NAME MARK - "FIRE HOSE BOX"
- WEIGHT : APPROX. 10 kg



NK CO., LTD

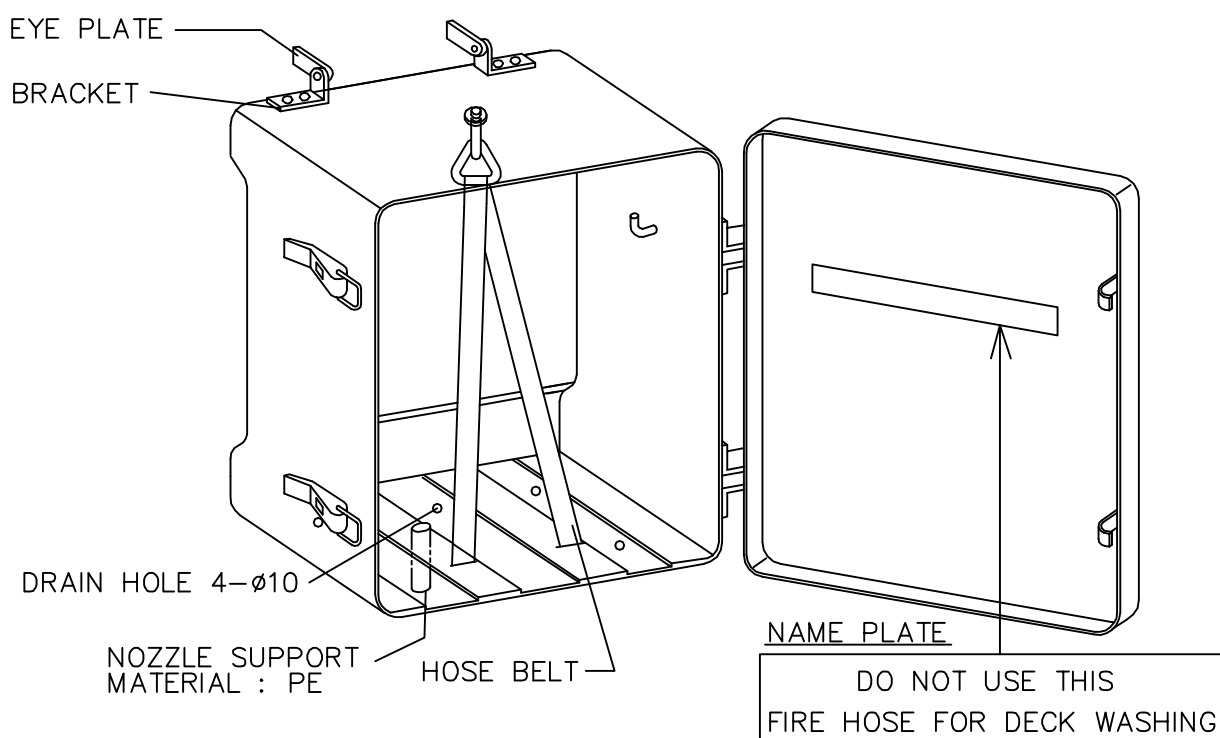
497, Shinpyeong-Dong, Saha-Gu, Busan, Korea  
 TEL. : 82-51-204-2211~3, FAX.: 82-51-204-2215  
[www.nkcf.com](http://www.nkcf.com)

DATA SHEET : 340-101-350

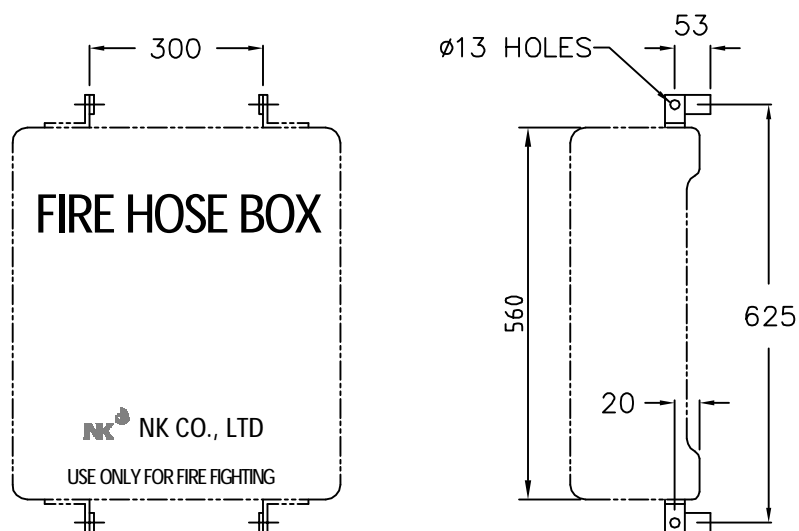
PART NO. : 115N80101

SHEET : 1 / 1

# FIRE HOSE BOX



## FIXING DIMENSION



## SPECIFICATION

- MATERIAL : GRP
- SIZE : 580W x 560H x 250D
- COLOR : OUTSIDE/INSIDE- RED  
NAME - WHITE  
NAME MARK - "FIRE HOSE BOX"
- WEIGHT : APPROX. 10 kg



NK CO., LTD

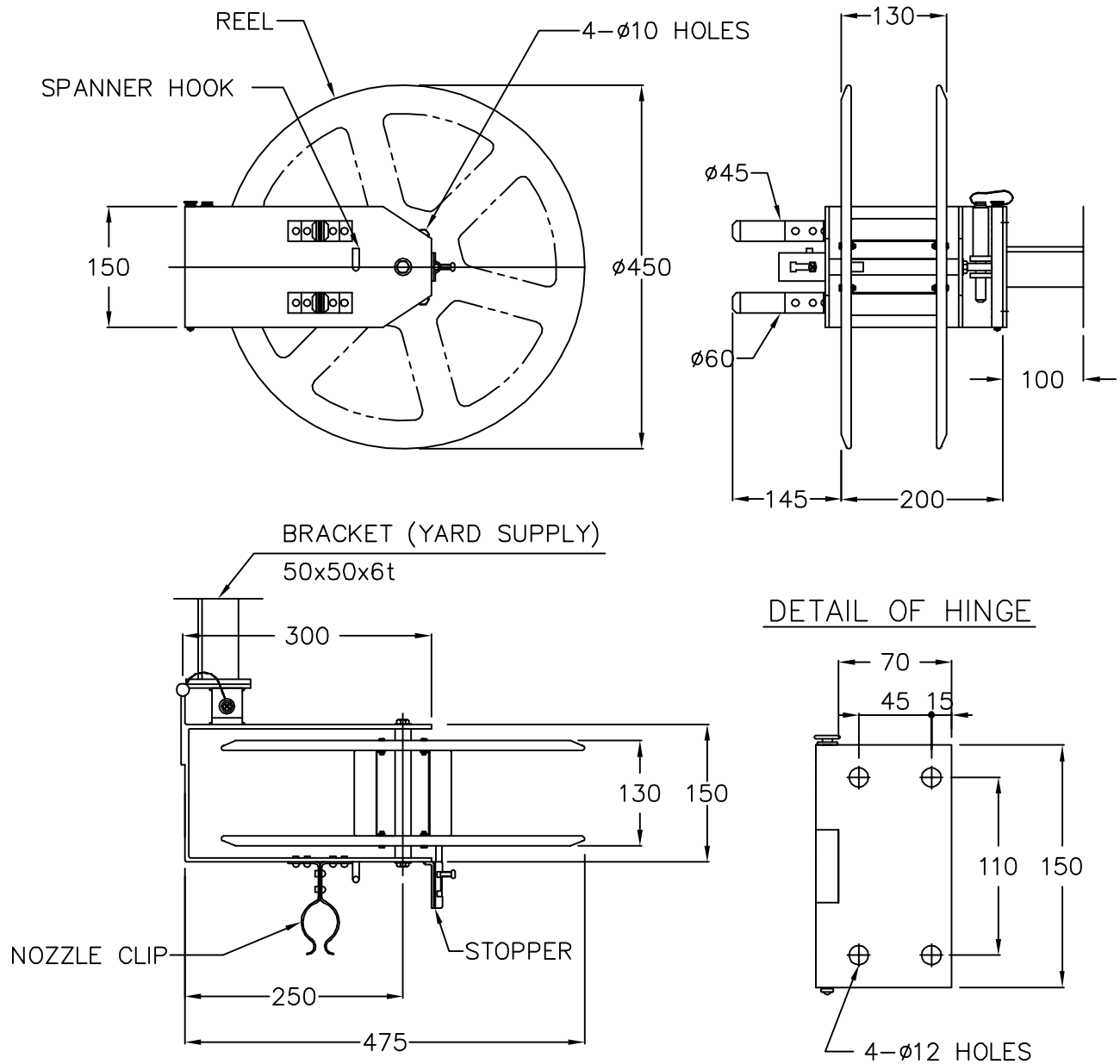
497, Shinpyeong-Dong, Saha-Gu, Busan, Korea  
TEL. : 82-51-204-2211~3, FAX.: 82-51-204-2215  
[www.nkcf.com](http://www.nkcf.com)

DATA SHEET : 340-101-350

PART NO. : 115N80111

SHEET : 1 / 1

# HOSE REEL



## SPECIFICATION

- MATERIAL : MILD STEEL
- PAINTING : RED
- WEIGHT : APPROX. 3.5 kg



NK CO., LTD

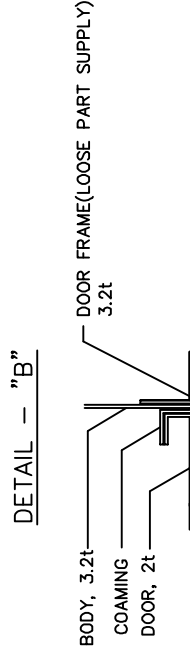
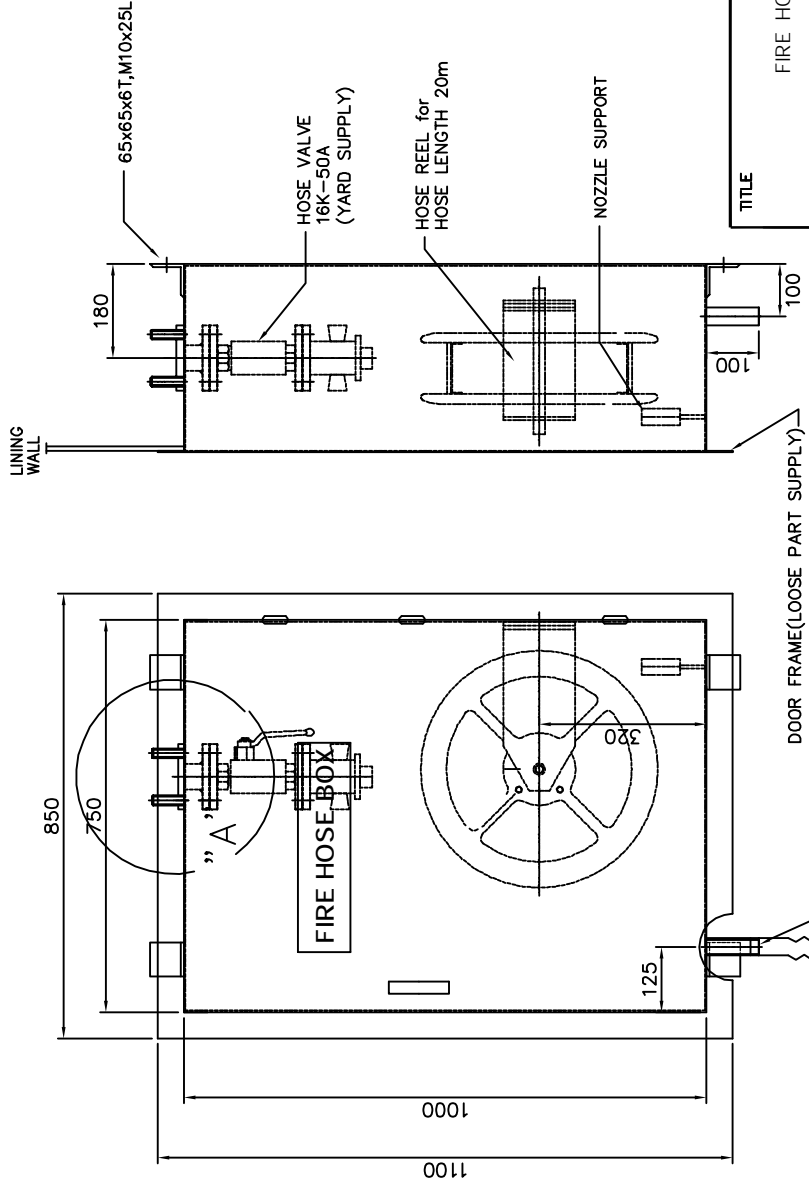
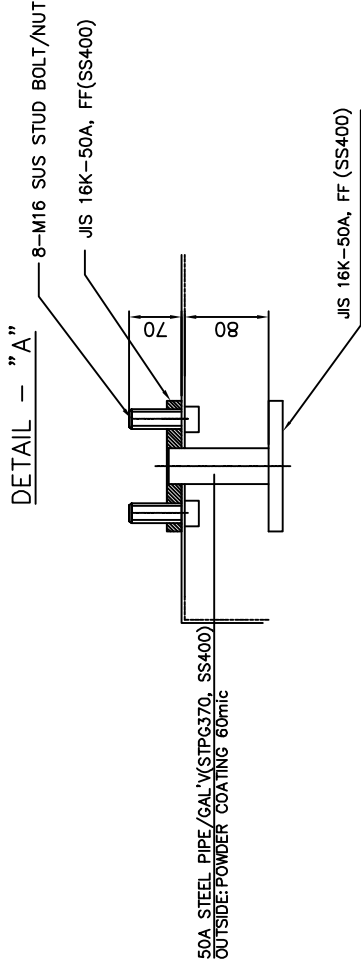
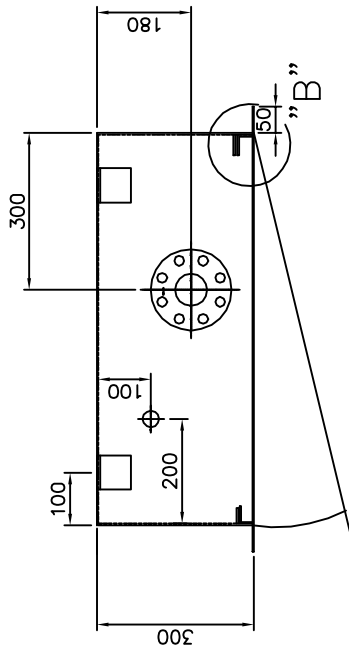
497, Shinpyeong-Dong, Saha-Gu, Busan, Korea  
 TEL. : 82-51-204-2211~3, FAX.: 82-51-204-2215  
[www.nkcf.com](http://www.nkcf.com)

DATA SHEET : 340-202-100

PART NO. : 312N0001

SHEET : 1 / 1





#### SPECIFICATION

- MATERIAL : SS400, 3.2t
- COLOR : INSIDE - RED  
OUTSIDE - RED
- FINISH : POWDER COATING 60mic
- QTY : 1 SET/SHIP

|                        |                 |                       |
|------------------------|-----------------|-----------------------|
| TITLE<br>FIRE HOSE BOX | APP : N. K. KIM | DWG NO. : 340-200-002 |
|                        | CHK : N. K. KIM | DATE : 2012. 02. 22.  |
|                        | CHK : M. Y. KIM | PART NO: 123N4480     |
|                        | DWN : M. Y. KIM | SHEET : 1 / 1         |